



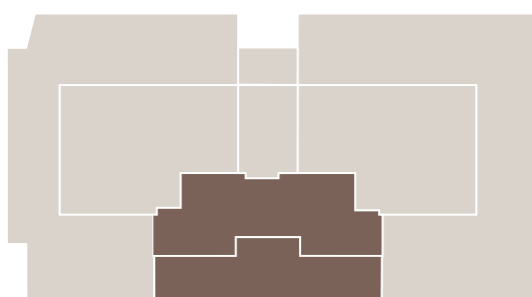
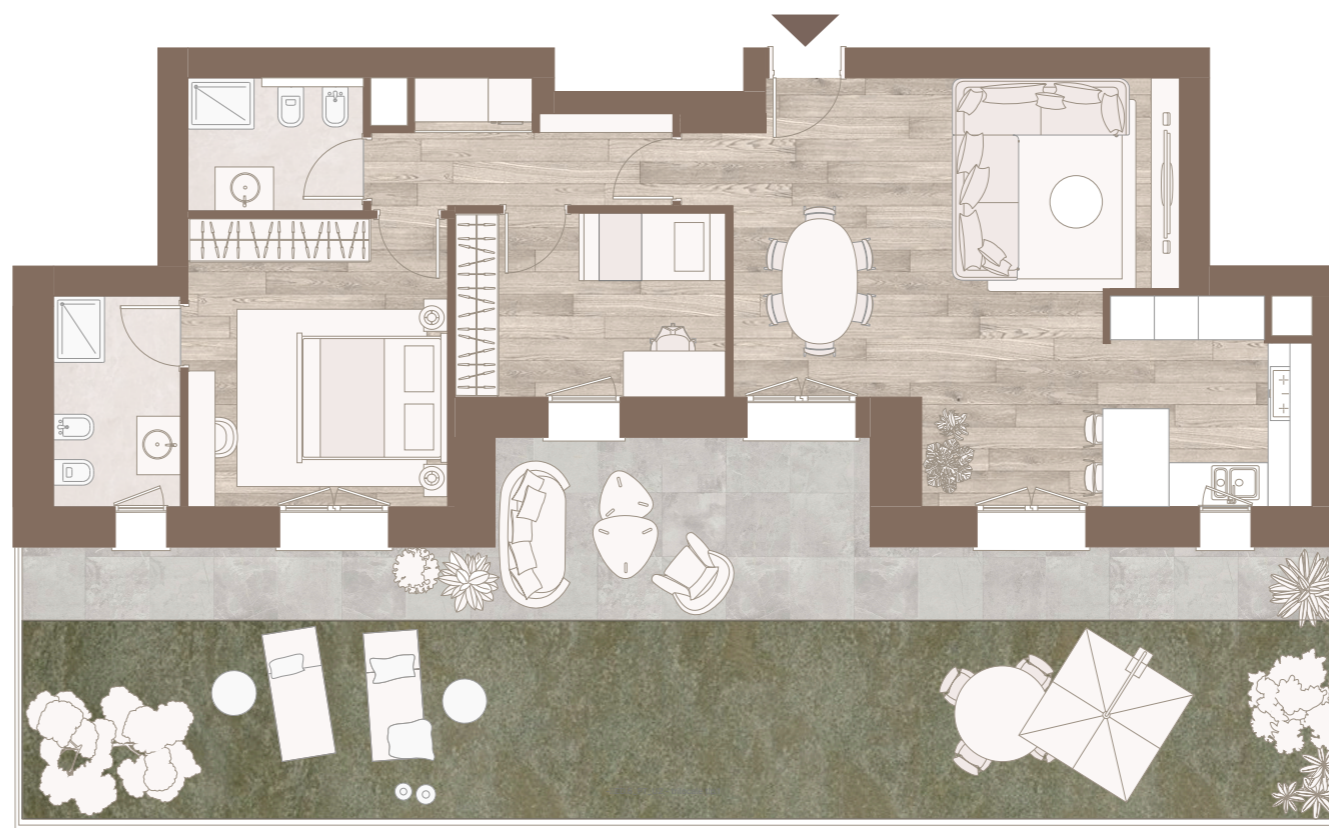
[BUILDING 6

Unit 02

Ground-floor residence with two bedrooms and a private garden.

The entrance opens onto a bright open-plan living area with an open kitchen. A hallway leads to the sleeping area, consisting of a master bedroom with en-suite bathroom, a single bedroom and a second full bathroom, as well as a practical laundry nook.

All main rooms overlook the private garden, which extends along the residence and creates continuity between indoors and outdoors. The covered porch, accessible from the living area, is ideal for relaxing outdoors.



INFORMATIONS

TPOLOGY	Two-bedroom apartment
FLOOR	Ground floor
COMMERCIAL SURFACE	117 sqm
EXPECTED DELIVERY DATE	February 2027
ENERGY CLASS	A4

Garage and cellar available upon request